

PTFE Convoluted Hose Type CA



The **marsoflex**® PTFE Convoluted Hose Type CA as a highly flexible multi-purpose suction and discharge hose is suitable for use in the chemical industry as well as the foodstuffs and pharmaceutical industries.

Due to their very high flexibility and the highest resistance to chemicals, acids, steam, pharmaceutical products or to solvents the area of application is practically unlimited.

The anti-adhesive quality of PTFE effectuates a trouble-free transport of the media. The smooth tube prevents nests of dirt and bacteria from forming. The hose tube can be cleaned without any difficulties.

Due to its FDA compliance the **marsoflex**® PTFE Convoluted Hose is also suitable for use in the foodstuffs industry.

Hose tube: PTFE, black, convoluted, seamlessly extruded, FDA compliant

Electrical resistance: $R < 10^6 \Omega$

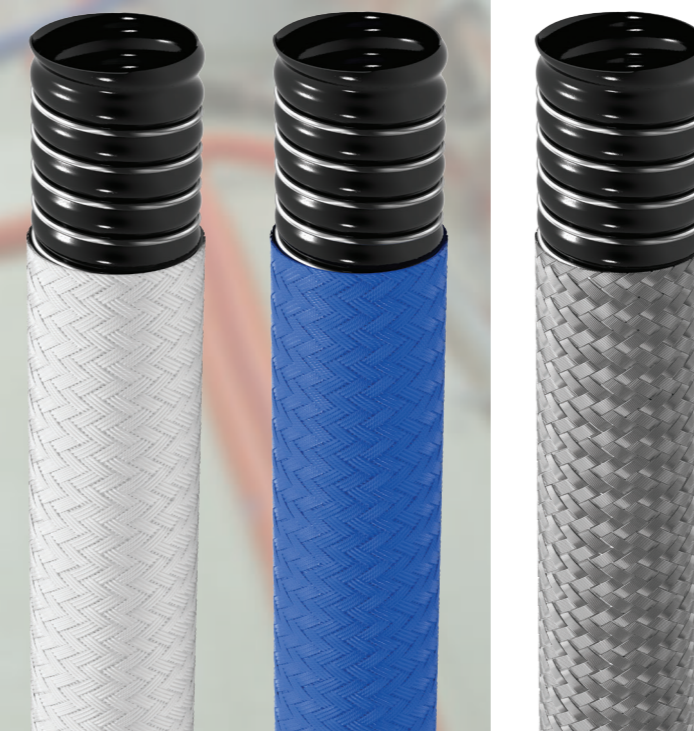
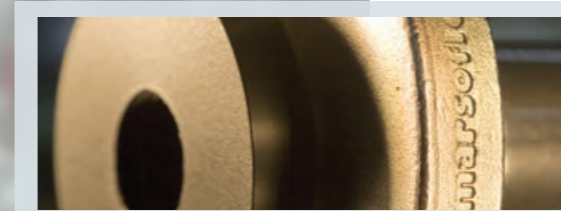
Hose cover: Stainless steel wire braids, polypropylene braids, PVDF braids or stainless steel wire braids with rubber lining

Temperature range: -60°C to +260°C, depending on reinforcement and material of fitting

Test documentation for hose lines assembled in accordance with EN 10204 3.1 as well as classification in accordance with the Pressure Equipment Directive (97 / 23 EC) are included in the scope of delivery.

marsoflex® PTFE Convoluted Hoses Type CA can be equipped with user-specific fittings and couplings.

Technical specifications are subject to change without notice.



Order-no.	Inner Ø mm	Stainless steel braiding with and without coating			PVDF braiding Polypropylene braiding		
		Working pressure bar	Burst pressure bar	Bending radius = mm	Working pressure bar	Burst pressure bar	Bending radius = mm
CA006	6	35	170	25			
CA008	8	35	170	25			
CA013	12	25	125	25	10	40	50
CA016	16	25	125	50	10	40	65
CA020	20	25	125	65	10	40	75
CA025	25	20	100	90	10	40	90
CA032	32	16	80	125	10	40	125
CA038	38	16	80	150	10	40	150
CA050	50	16	80	200	10	40	200
CA065	65	10	50	230	7	28	230
CA080	80	10	50	300	8	24	300
CA100	100	10	40	400			
CA150	150	6	24	520			