

PTFE Smooth Hose Type GC

The **marsoflex**® PTFE Smooth Hose Type GC is suitable for the chemical industry as well as the pharmaceutical and foodstuffs industries.

PTFE Smooth Hose Type GC is used in applications requiring a smooth hose with high flexibility. The stainless steel helix provides the smooth hose with a very high vacuum and kink resistance.

The anti-adhesive quality of PTFE effectuates a trouble-free transport of the media. The smooth tube prevents nests of dirt and bacteria from forming. The hose tube can be cleaned without any difficulties.

Due to its FDA compliance the **marsoflex**® PTFE Smooth Hose is also suitable for use in the foodstuffs industry.

Hose tube: PTFE, white, smooth, seamlessly extruded, FDA compliant

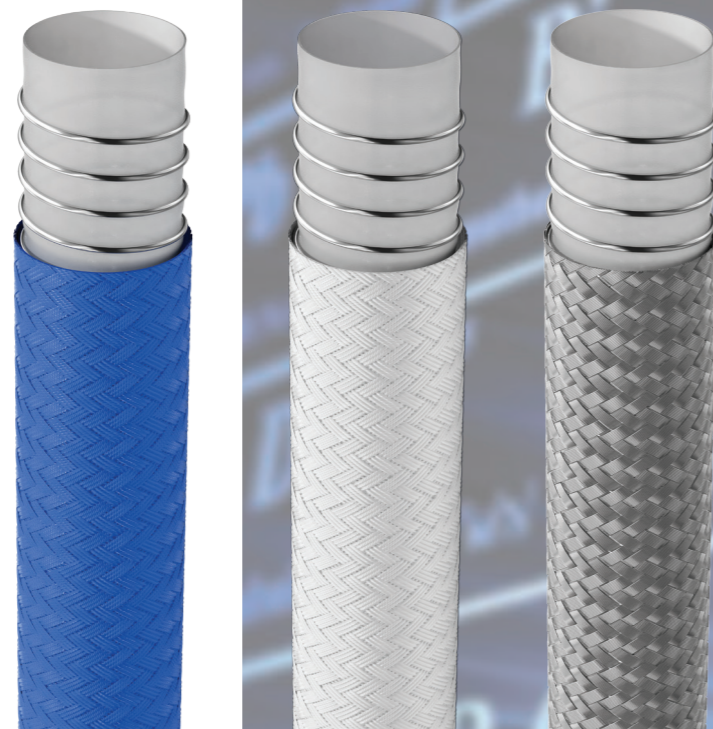
Hose cover: Stainless steel wire braids, polypropylene braids, PVDF braids or stainless steel wire braids with rubber lining

Temperature range: -60°C to +260°, depending on reinforcement and material of fittings

Test documentation for hose lines assembled in accordance with EN 10204 3.1 as well as classification in accordance with the Pressure Equipment Directive (97 / 23 EC) are included in the scope of delivery.

marsoflex® PTFE Smooth Hoses Type GC can be equipped with user-specific fittings and couplings.

Technical specifications are subject to change without notice.



Order-no.	Inner Ø mm	Stainless steel braiding with and without coating			PVDF braiding Polypropylene braiding		
		Working pressure bar	Burst pressure bar	Bending radius = mm	Working pressure bar	Burst pressure bar	Bending radius = mm
GC 13	12	40	200	110	10	40	110
GC 16	16	35	175	125	10	40	125
GC 20	20	20	100	150	10	40	150
GC 25	25	16	80	200	10	40	200
GC 32	32	16	80	250	10	40	250
GC 40	38	16	80	300	10	40	300
GC 50	50	16	80	350	10	40	350

