



Female multi-purpose quick couplings for safety clamps

Order no.	DN ¹	Thread ²	Material ³	Seal type	Weight = kg
MS135RD44SS	13 x 5 (1/2")	Rd. 44 x 1/6"	SS	Tapered	0.45
MS135RD44MS			MS	Tapered	0.42
MS135RD44ST			ST	Tapered	0.42
MS196RD44SS	19 x 6 (3/4")	Rd. 44 x 1/6"	SS	Tapered	0.47
MS196RD44MS			MS	Tapered	0.44
MS196RD44ST			ST	Tapered	0.44
MS256RD44SS	25 x 6 (1")	Rd. 44 x 1/6"	SS	Tapered	0.45
MS256RD44MS			MS	Tapered	0.42
MS256RD44ST			ST	Tapered	0.42
MS326RD44SS	32 x 6 (1 1/4")	Rd. 44 x 1/6"	SS	Tapered	0.50
MS326RD44MS			MS	Tapered	0.52
MS326RD44ST			ST	Tapered	0.52



Male multi-purpose quick couplings for safety clamps

Order no.	DN ¹	Thread ²	Material ³	Seal type	Weight = kg
VS135RD44SS	13 x 5 (1/2")	Rd. 44 x 1/6"	SS	Tapered	0.23
VS135RD44MS			MS	Tapered	0.21
VS135RD44ST			ST	Tapered	0.21
VS196RD44SS	19 x 6 (3/4")	Rd. 44 x 1/6"	SS	Tapered	0.25
VS196RD44MS			MS	Tapered	0.21
VS196RD44ST			ST	Tapered	0.21
VS256RD44SS	25 x 6 (1")	Rd. 44 x 1/6"	SS	Tapered	0.27
VS256RD44MS			MS	Tapered	0.29
VS256RD44ST			ST	Tapered	0.29
VS326RD44SS	32 x 6 (1 1/2")	Rd. 44 x 1/6"	SS	Tapered	0.35
VS326RD44MS			MS	Tapered	0.33
VS326RD44ST			ST	Tapered	0.33

Multi-purpose quick couplings for safety clamps

With cone, swivel nut or male thread
Radius 44 x 1/6", suitable for 25 bar working pressure (PN 25)

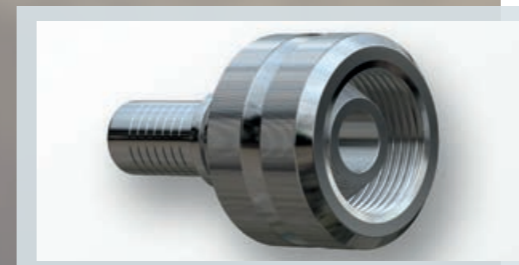
Female multi-purpose quick coupling for safety clamps
Female thread on one side
Hose fitting with annular security collar on the other side

Male multi-purpose quick coupling for safety clamps
Male thread on one side
Hose fitting with annular security collar on the other side

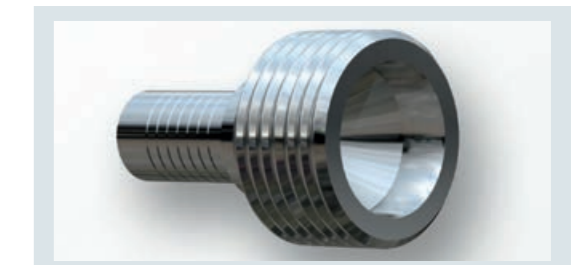
¹ DN: inner diameter of hose x wall thickness in mm
² Thread: RD = round thread according to DIN 405
³ Materials: ST = steel, SS = stainless steel 1.4571/1.4408, MS = brass

Other materials on request

Technical specifications are subject to change without further notice.



Female multi-purpose quick couplings for safety clamps



Male multi-purpose quick couplings for safety clamps